



Ashford Church of England  
Primary School

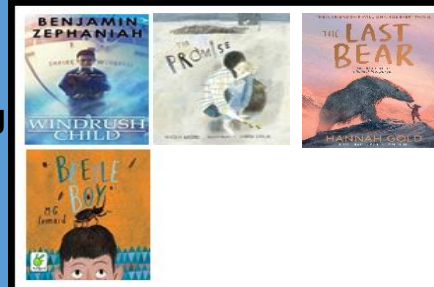
# Year 6

## Maths

In Maths we are learning:

- Multiplication and Division
- Converting units of measure
- Fractions

This half-term  
we are reading



## English

In English we are learning to:

- Understand and use a range of prefixes and suffixes.
- Use relative clauses and relative pronouns.
- Understand and identify the difference between antonyms and synonyms.
- Use semi-colons to mark boundaries between independent clauses.
- Understand and use passive verbs.

## Autumn 2

## RE

In RE we are learning about what Christmas means to Christians and how different advertisements give Christmas different meanings.

## Science

We are learning about electricity and how an electrical circuit works. We will also be investigating how different components effect how a

## History/ Geography

In Geography we are learning about Italy.

We will be comparing how Italy is geographically the same and different the UK.

## Art/ DT

We will be designing and making electrical hand games.

## Music

We will be learning about Jazz music.

## Computing

We will be learning about web pages and designing our own.

## PE

We will be developing our skills in Gymnastics and Netball.